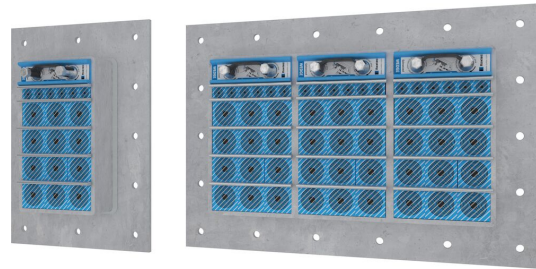




用于箱柜的 Roxtec GHM EMC 穿隔系统

EMC 和高电缆密度穿隔系统。

Roxtec GHM EMC 是一种确保电磁兼容性的轻型电缆引入密封系统。穿隔框架通过栓接安装于带有密封条匹配在框架和结构之间并带有帮助提高 EMC 性能的导电垫片。它有不同的材质可供选择并可提供单开孔或多种组合开孔。有提供电磁屏蔽的 Roxtec ES 模块与防止传导干扰的 PE 模块可供选择。这些模块适配各种规格的电缆和管道并可用于在穿隔系统内提供备用容量。使用 Roxtec EC 检测条来测试 Roxtec BG™ 或 ES 电缆穿隔系统安装的电气性能。



- 防啃齿动物
- 节省空间

产品特性



耐火



IP/UL NEMA



EMI 保护

安装结构



箱柜和机柜



金属

安装类型



栓接

等级和证书

火灾

- A 级符合 IMO 2010 FTP 规范

密封性

- IP 66/67

支持

- 电磁屏蔽
- 电位均衡

框架尺寸

mm/kg

下方的不同框架只是部分选择。要了解全部的框架和配置请访问 [roxtec.com](https://www.roxtec.com)。

标题	框架开口	密封空间	外部尺寸 WxHxD	开孔尺寸 w x h	重量	产品编号
GHM 6x1 GALV INCL TSL 15x6	1	120 x 180	252.5 x 350 x 60	147.5(+5/-5) x 245(+5/-5)	4.5	5GHM000004089
GHM 6x2 GALV INCL TSL 15x6	2	120 x 180	383 x 350 x 60	278(+5/-5) x 245(+5/-5)	7.7	5GHM000006300
GHM 6x3 GALV INCL TSL 15x6	3	120 x 180	513.5 x 350 x 60	408.5(+5/-5) x 245(+5/-5)	10.5	5GHM000004091
GHM 6x1 PRIMED INCL TSL 15x6	1	120 x 180	252.5 x 350 x 60	147.5(+5/-5) x 245(+5/-5)	4.9	GHM6000000112
GHM 6x2 PRIMED INCL TSL 15x6	2	120 x 180	383 x 350 x 60	278(+5/-5) x 245(+5/-5)	7.4	GHM6000000212
GHM 6x3 PRIMED INCL TSL 15x6	3	120 x 180	513.5 x 350 x 60	408.5(+5/-5) x 245(+5/-5)	9.9	GHM6000000312
GHM 6x1 AISI316 INCL TSL 15x6	1	120 x 180	252.5 x 350 x 60	147.5(+5/-5) x 245(+5/-5)	4.9	5GHM000004746
GHM 6x2 AISI316 INCL TSL 15x6	2	120 x 180	383 x 350 x 60	278(-2) x 245	7.4	5GHM000004027
GHM 6x3 AISI 316 INCL TSL 15x6	3	120 x 180	513.5 x 350 x 60	408.5(+5/-5) x 245(+5/-5)	9.9	5GHM000004044



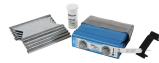
密封组件数据

密封组件

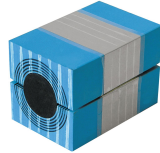
配件



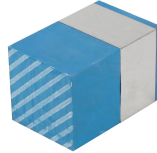
润滑脂



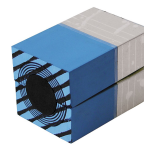
楔形压紧件和楔形压紧套件
ES 型



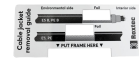
Multidiameter™ 多径
RM ES 模块



RM ES 盲堵模块



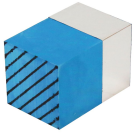
Multidiameter™ 多径
RM PE 模块



配件 ES 和 BG



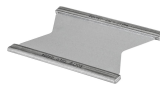
支架工具



RM PE 盲堵模块



楔形压紧件和楔形压紧套件



隔层板



ES 密封套件

如需了解详细信息请访问 [roxtec.com](https://www.roxtec.com)。

The product information provided by Roxtec does not release the purchaser of the Roxtec system, or part thereof, from the obligation to independently determine the suitability of the products for the intended process, installation and/or use. Roxtec gives no guarantee for the Roxtec system or any part thereof and assumes no liability for any loss or damage whatsoever, whether direct, indirect, consequential, loss of profit or otherwise, occurred or caused by the Roxtec systems or installations containing components not manufactured by an authorized manufacturer and/or occurred or caused by the use of the Roxtec system in a manner or for an application other than for which the Roxtec system was designed or intended. Roxtec expressly excludes any implied warranties of merchantability and fitness for a particular purpose and all other express or implied representations and warranties provided by statute or common law. User determines suitability of the Roxtec system for intended use and assumes all risk and liability in connection therewith. In no event shall Roxtec be liable for indirect, consequential, punitive, special, exemplary or incidental damages or losses. The Roxtec products are offered and sold in accordance with the conditions of the Roxtec General Terms of Sales. The latest version of the Roxtec General Terms of Sales can be downloaded from <https://www.roxtec.com/en/about-us/about-roxtec/general-terms-of-sales/>. We reserve the right to make changes to the product and technical information without further notice. Any errors in print or entry are no claims for indemnity. The content of this publication is the property of Roxtec International AB and is protected by copyright. This document was generated on: 2024-04-18